

# Polyploidy drives autophagy to participate in plant-specific functions

Moyang Liu<sup>1, 2,3,4</sup>, Ming Yang<sup>1,4</sup>, Heng Liang<sup>2,3</sup>, Bote Luo<sup>1,4</sup>,  
Junjie Deng<sup>1,4</sup>, Lingyan Cao<sup>5</sup>, Daojun Zheng<sup>2,3</sup>, Cheng Chen<sup>1,3,4</sup>



<sup>1</sup>Shanghai Collaborative Innovation Center of Agri-Seeds/School of Agriculture and Biology, Shanghai Jiao Tong University, Shanghai 200240, China

<sup>2</sup>Institute of Tropical Horticulture Research, Hainan Academy of Agricultural Sciences, Haikou 571100, China

<sup>3</sup>Tropical Horticultural Plant Research Center, Hainan Research Institute, Shanghai Jiao Tong University, Sanya 572000, China

<sup>4</sup>Joint Center for Single Cell Biology, School of Agriculture and Biology, Shanghai Jiao Tong University, Shanghai 200240, China

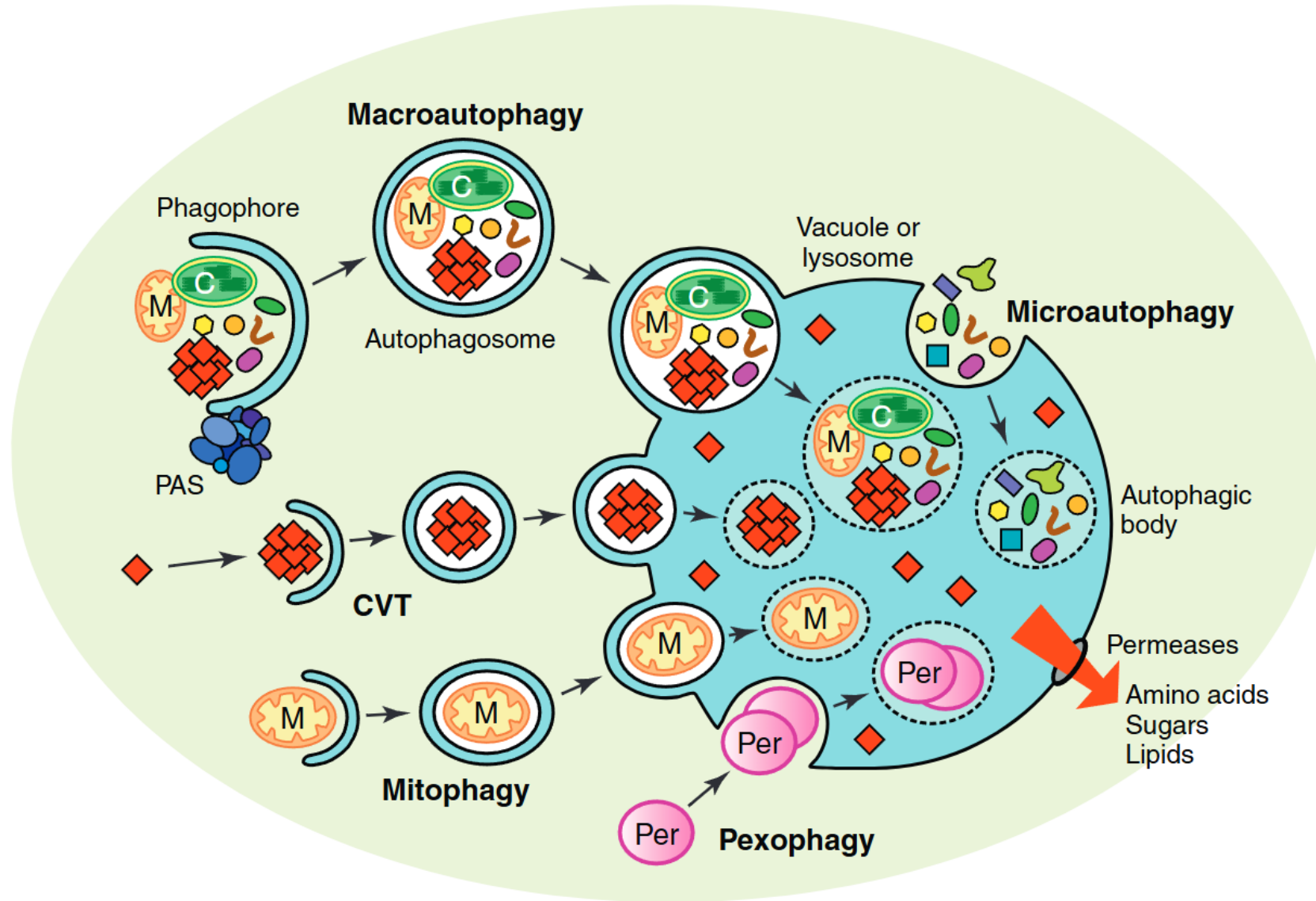
<sup>5</sup>Joint International Research Laboratory of Metabolic and Developmental Sciences, State Key Laboratory of Hybrid Rice, School of Life Sciences and Biotechnology, Shanghai Jiao Tong University, Shanghai 200240, China

Moyang Liu, Ming Yang, Heng Liang, Bote Luo, Junjie Deng, Lingyan Cao, Daojun Zheng, Cheng Chen. 2024. Polyploidy drives autophagy to participate in plant-specific functions. *iMeta* 3: e252.

<https://doi.org/10.1002/imt2.252>



# Introduction



# Identification of core autophagy co-operating genes

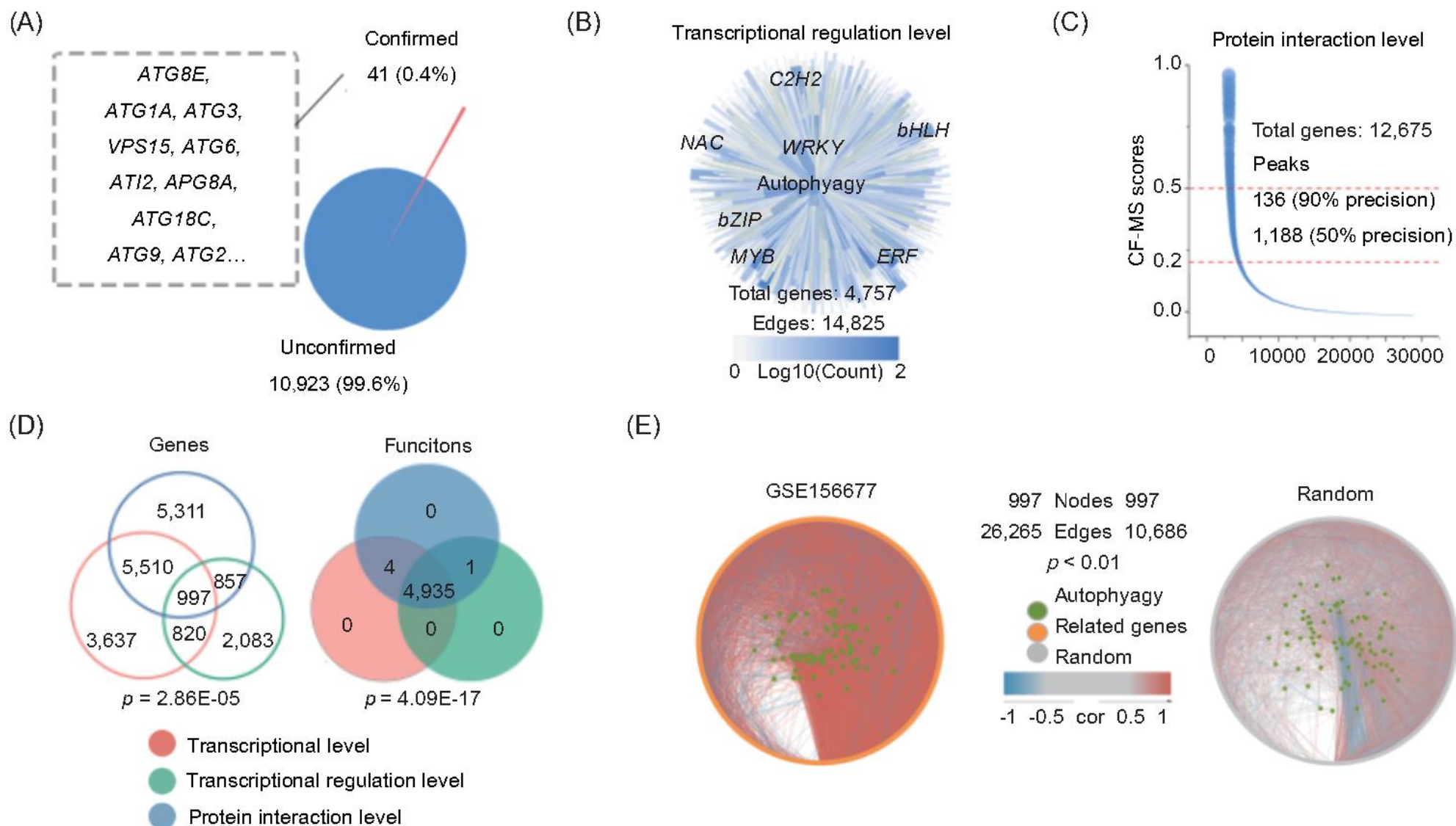


Figure 1. Co-functional network of plant autophagy

# Extensive identification of homologs of core autophagy coordinating genes

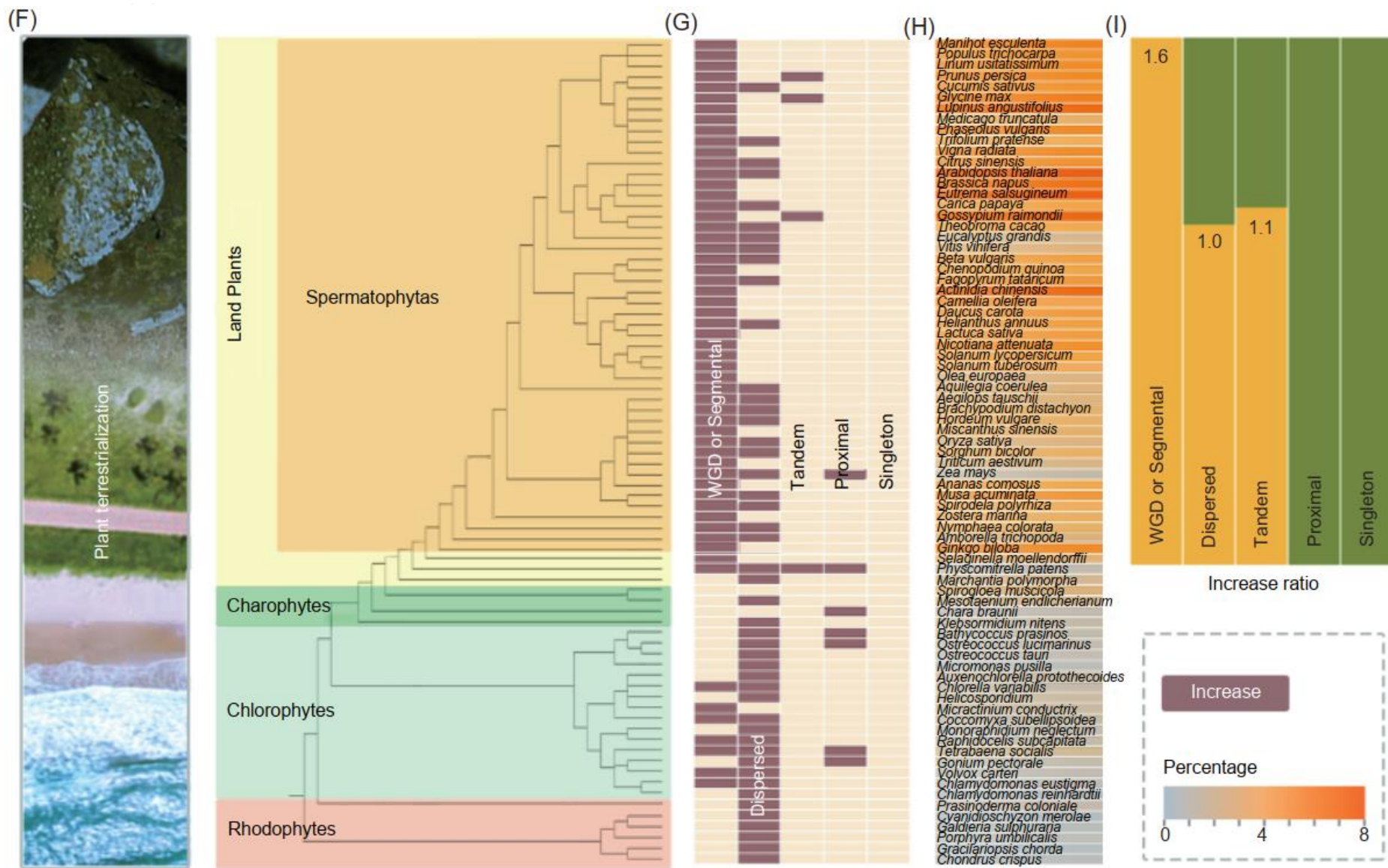


Figure 1. Co-functional network of plant autophagy



# Evolution of plant-specific autophagy coordination functions

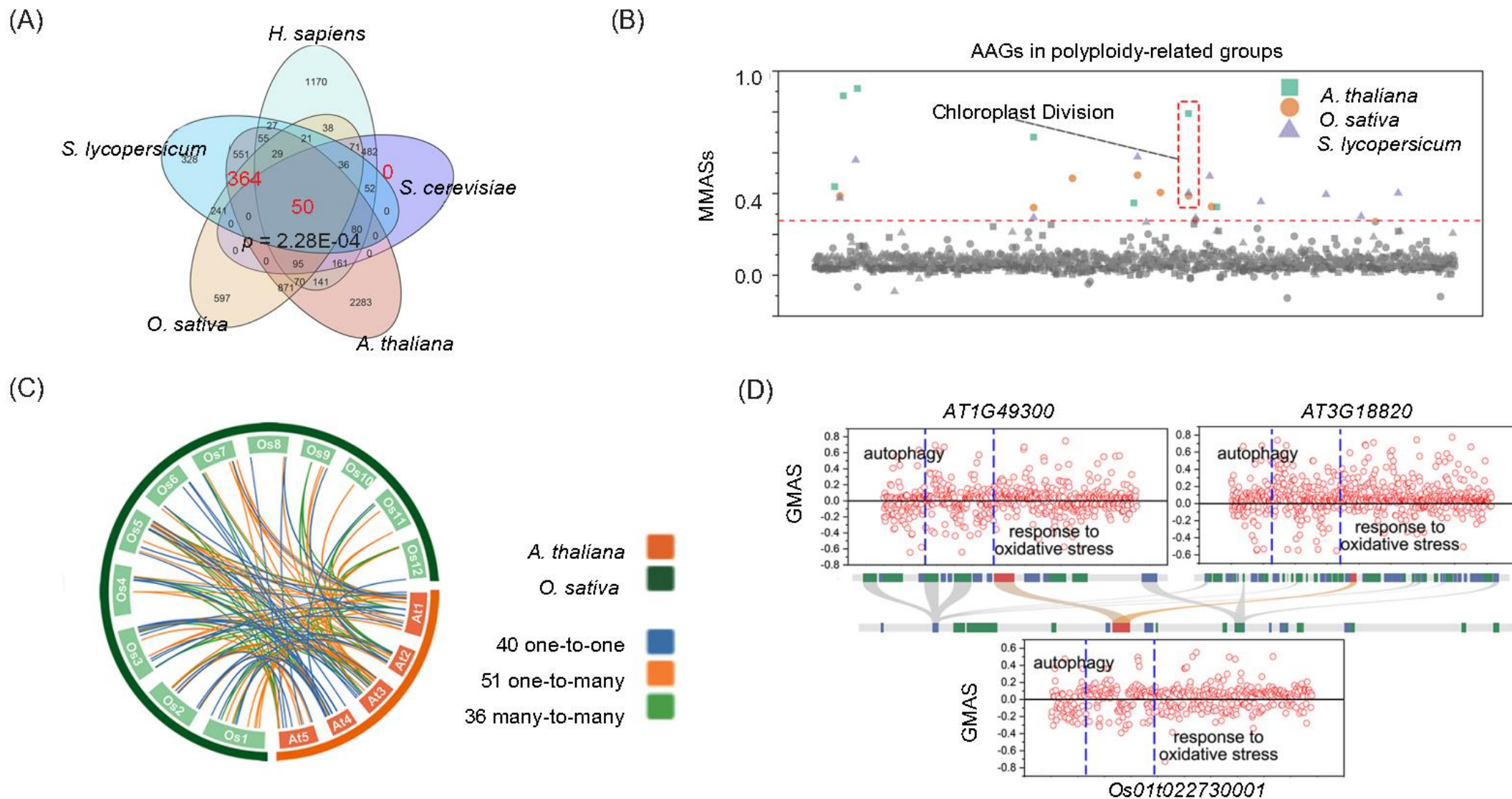
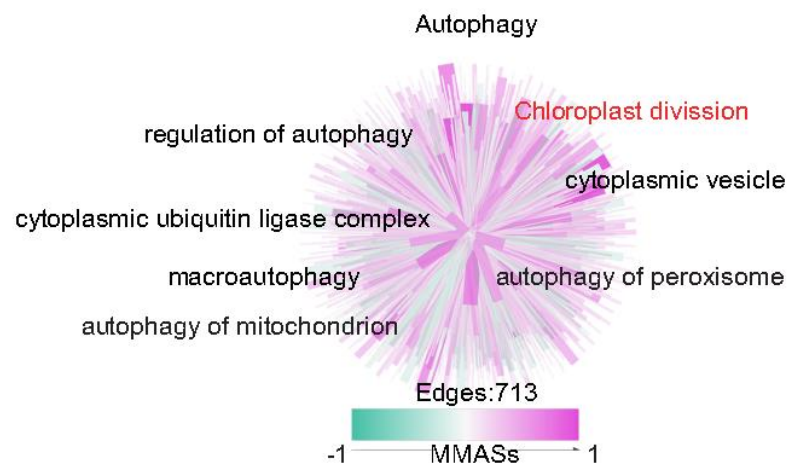


Figure 2. Functional differentiation of polyploidized AAGs

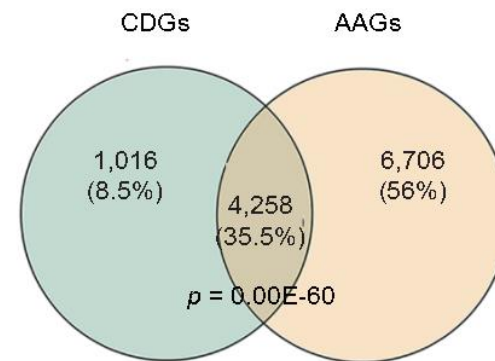


# Clues to the connection between autophagy and plant-specific biological processes

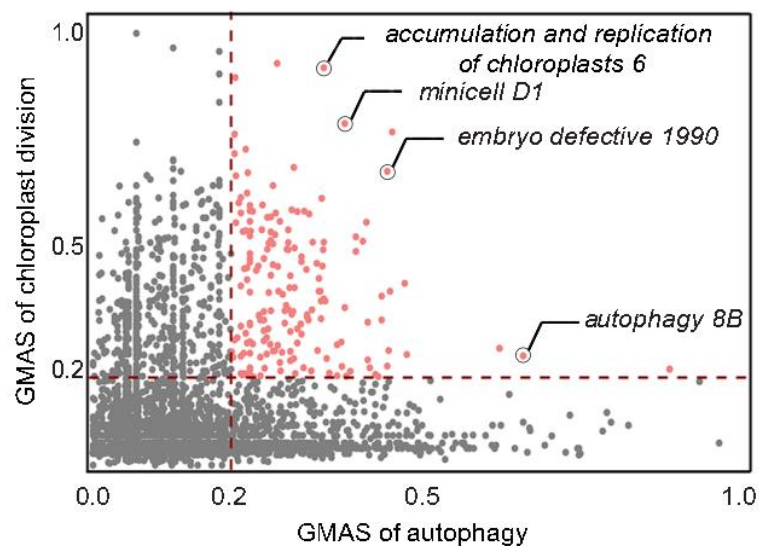
(E)



(F)



(G)



(H)

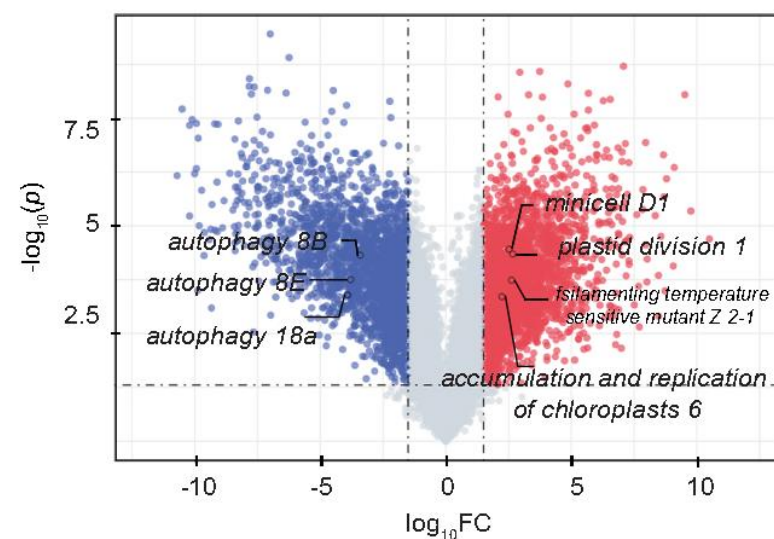
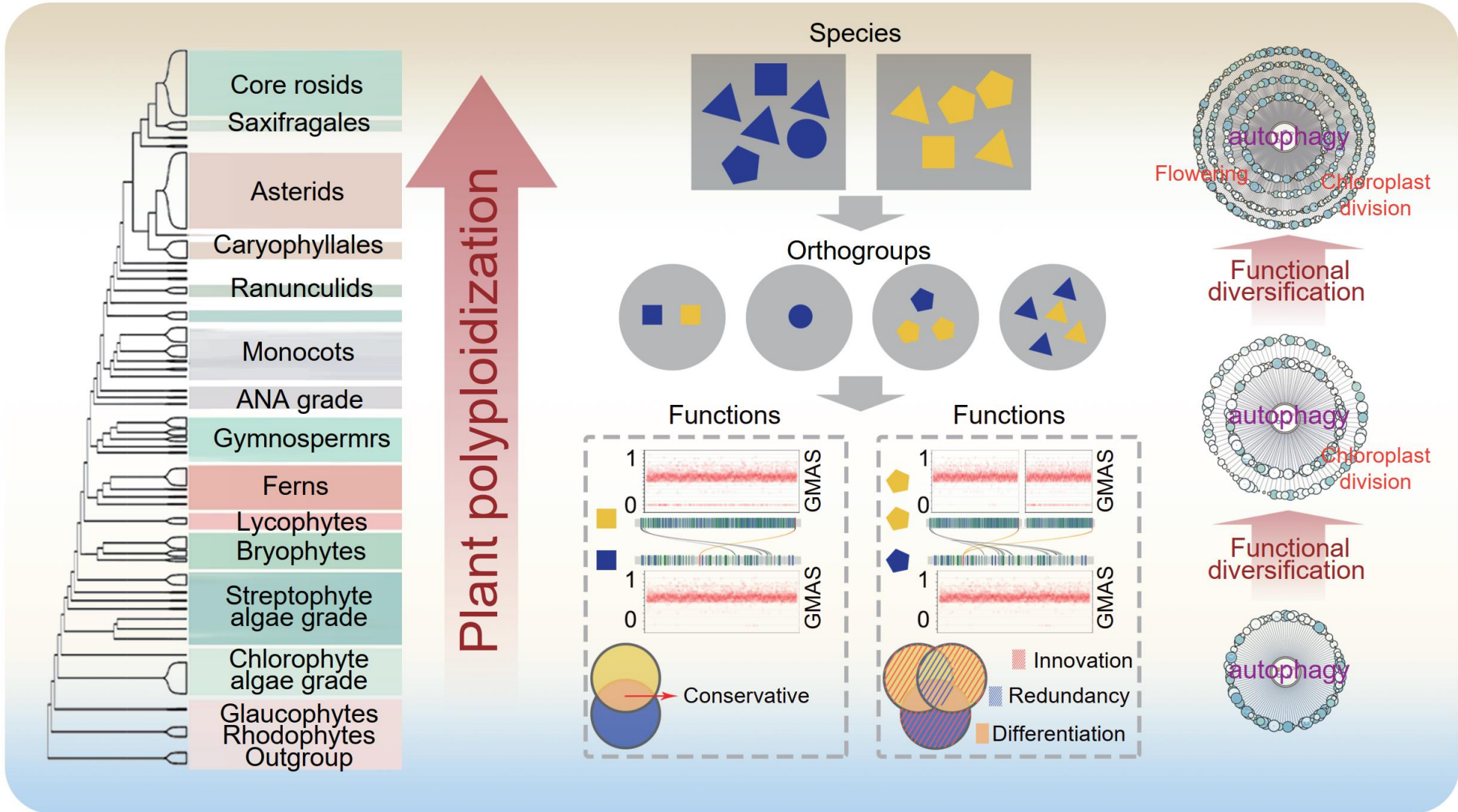


Figure 2. Functional differentiation of polyploidized AAGs



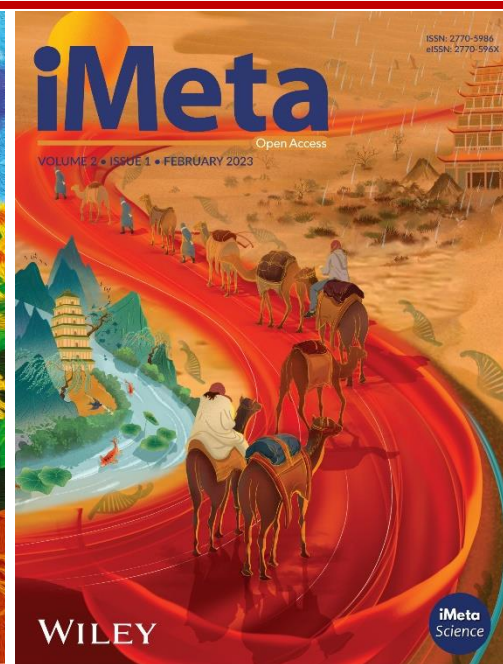
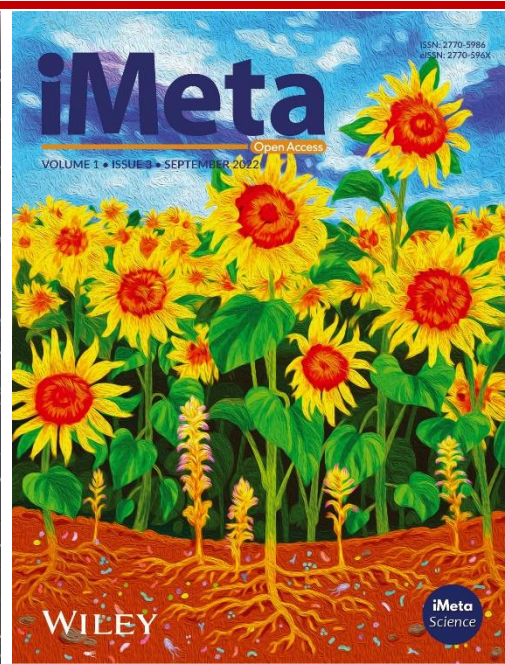
# Summarize



Moyang Liu, Ming Yang, Heng Liang, Bote Luo, Junjie Deng, Lingyan Cao, Daojun Zheng, Cheng Chen. 2024.  
Polyploidy drives autophagy to participate in plant-specific functions. *iMeta* 3: e252.  
<https://doi.org/10.1002/imt2.252>


**iMeta:** Integrated meta-omics to change the understanding of the biology and environment



**WILEY**



“***iMeta***” is a Wiley partner journal launched by iMeta Science Society in 2022, first **impact factor (IF) 23.8 in 2024, ranking 2/161 in the microbiology**. It aims to publish innovative and high-quality papers with broad and diverse audiences. **Its scope is similar to *Nature Biotechnology, Nature Methods, Nature Microbiology, Nature Food, etc.*** Its unique features include video abstract, bilingual publication, and social media dissemination, with more than 600,000 followers. It has published 220+ papers and been cited for 5600+ times, and has been indexed by **SCIE / WOS, PubMed, Google Scholar, and Scopus**.

“***iMetaOmics***” is a sister journal of “***iMeta***” launched in 2024, with a **target IF>10, and its scope is similar to *Nature Communications, Microbiome, ISME J, Nucleic Acids Research, Briefings in Bioinformatics, etc.*** All contributes are welcome!

 Society: <http://www.imeta.science>  
Publisher: <https://wileyonlinelibrary.com/journal/imeta>  
Submission: <https://wiley.atyponrex.com/journal/IMT2>  
<https://wiley.atyponrex.com/journal/IMO2>

 [office@imeta.science](mailto:office@imeta.science)  
[imetaomics@imeta.science](mailto:imetaomics@imeta.science)  
 [Promotion Video](#)

 [iMetaScience](#)  
 [iMetaScience](#)