



# QSCNAS: A platform for quorum sensing and quenching bacteria analysis in global wastewater treatment plants.

Yong-Chao Wang<sup>1</sup>, Sen Wang<sup>1</sup>, Ya-Hui Lv<sup>1</sup>, Can Wang<sup>1</sup>

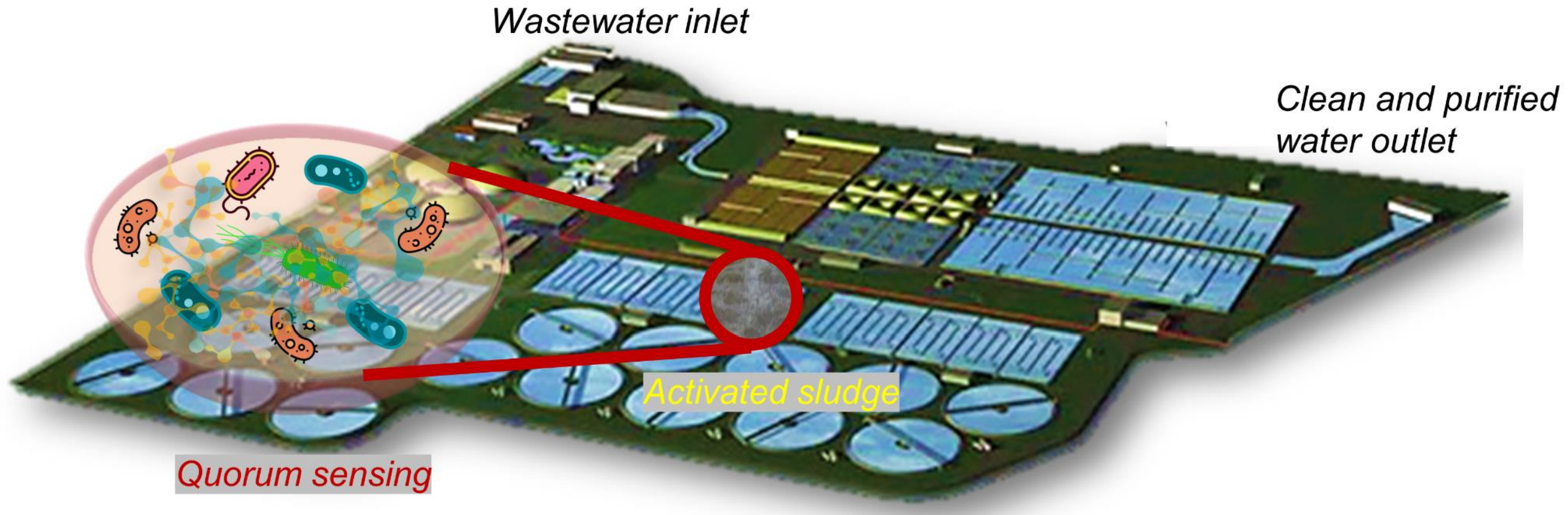
<sup>1</sup>School of Environmental Science and Engineering,  
Tianjin University, Tianjin, China



Yong-Chao Wang, Sen Wang, Ya-Hui Lv, Can Wang. 2025. QSCNAS: A platform for quorum sensing and quenching bacteria analysis in global wastewater treatment plants. *iMeta* 4: e70026. <https://doi.org/10.1002/imt2.70026>

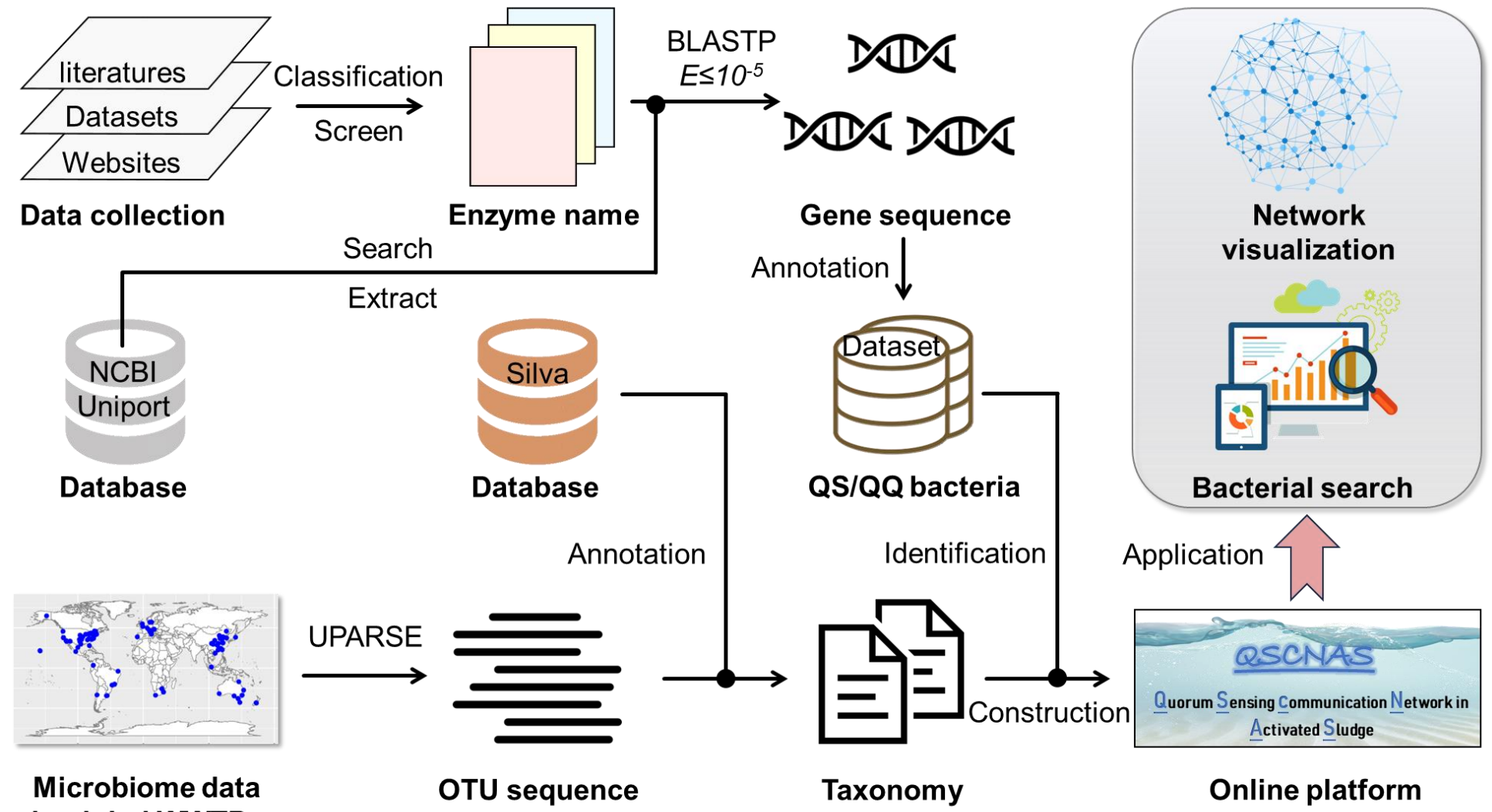


# Introduction





# QSCNAS construction process



<http://www.qscnas.cn>

Figure 1. Construction of quorum sensing communication network in WWTPs.

# The distribution of various QS languages in WWTPs

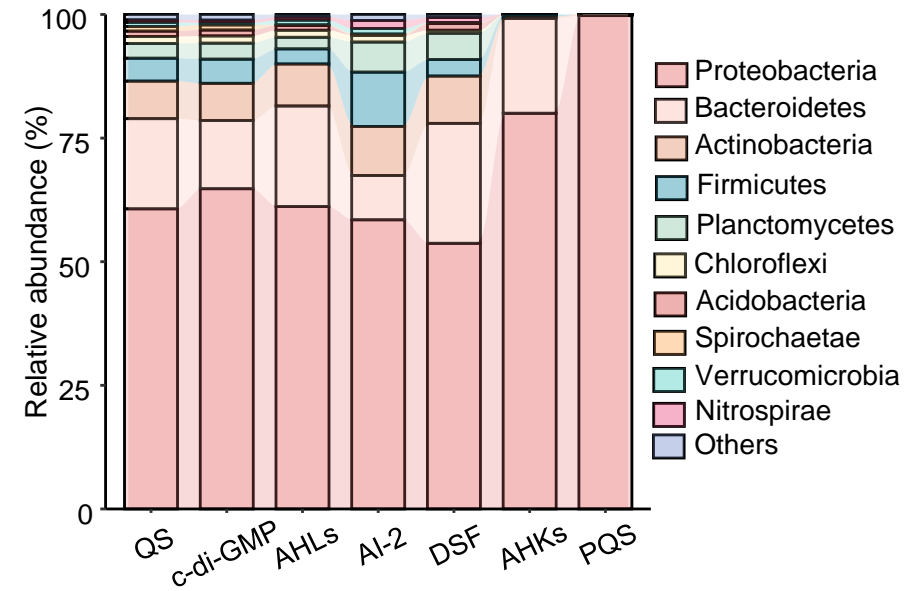
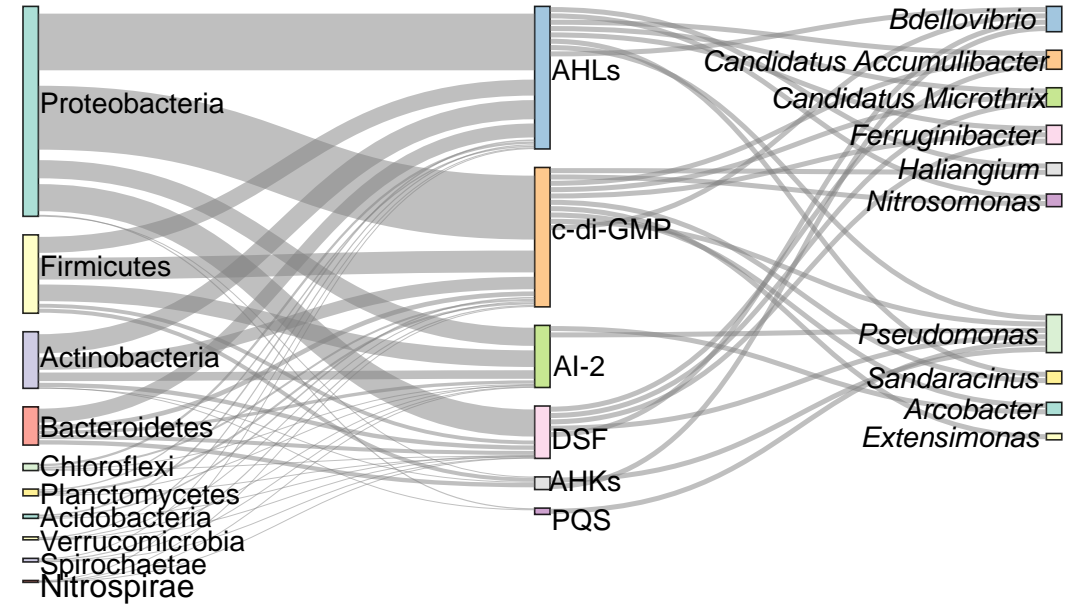
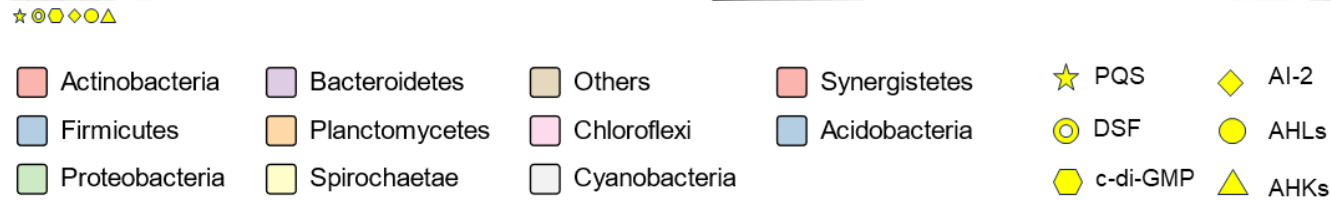
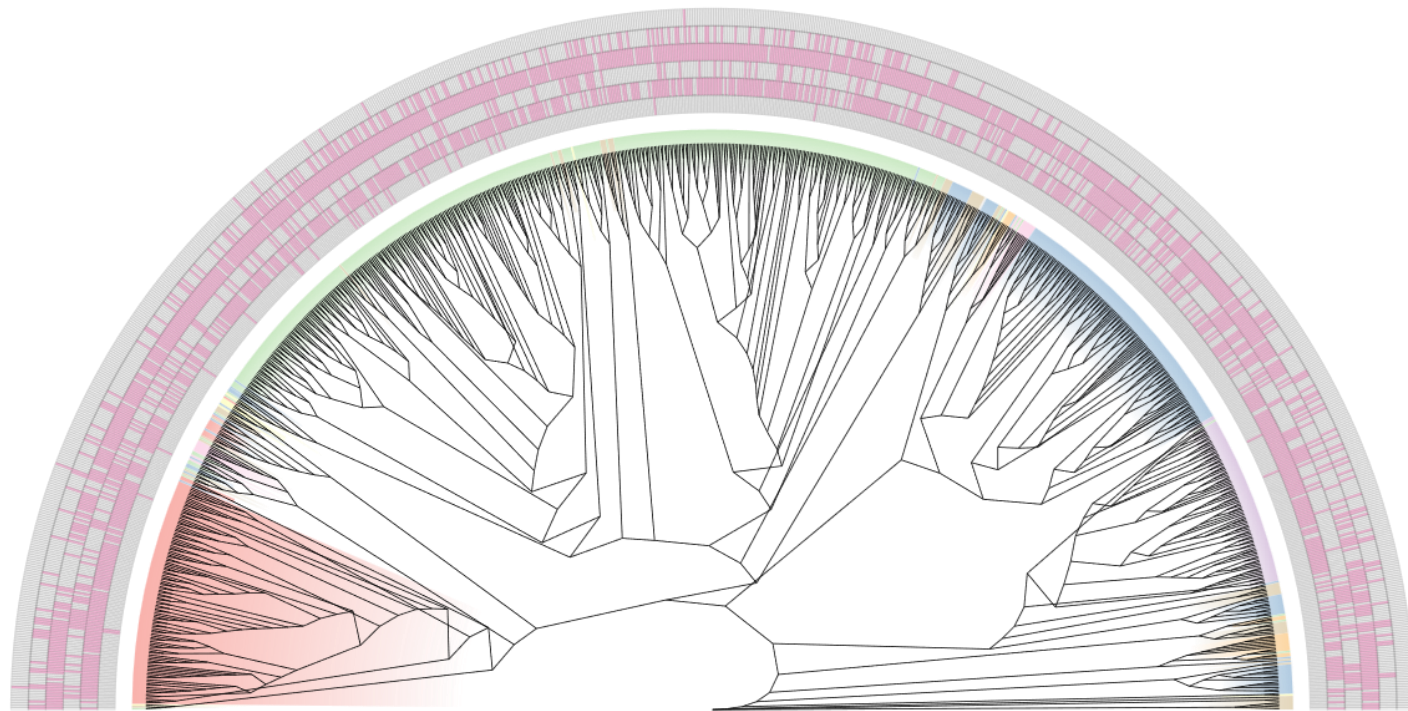


Figure 1. Construction of quorum sensing communication network in WWTPs.

# QS communication network analysis in WWTPs

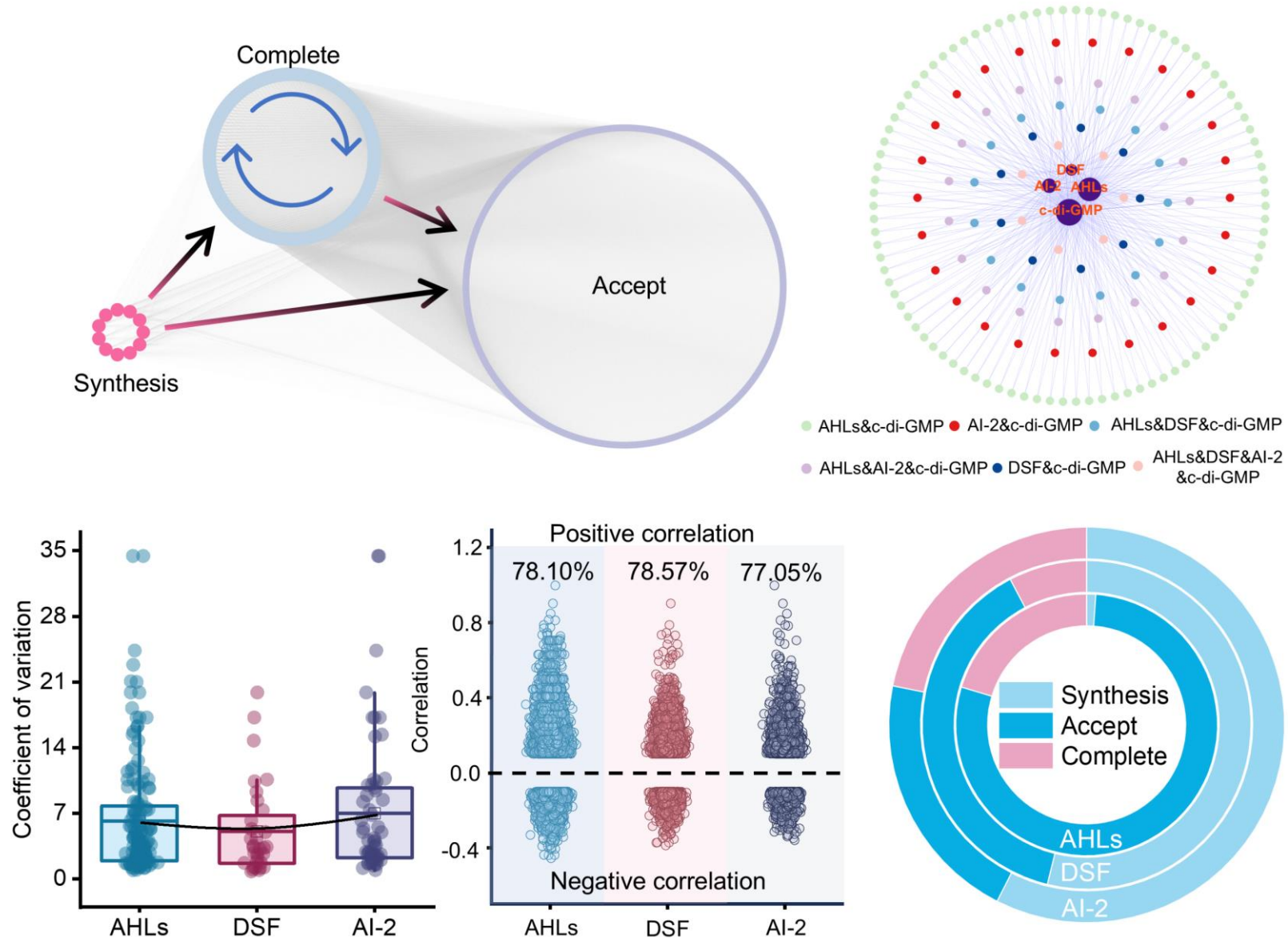


Figure 2. Analysis of QS communication networks in WWTPs.



# QS communication network analysis in WWTPs

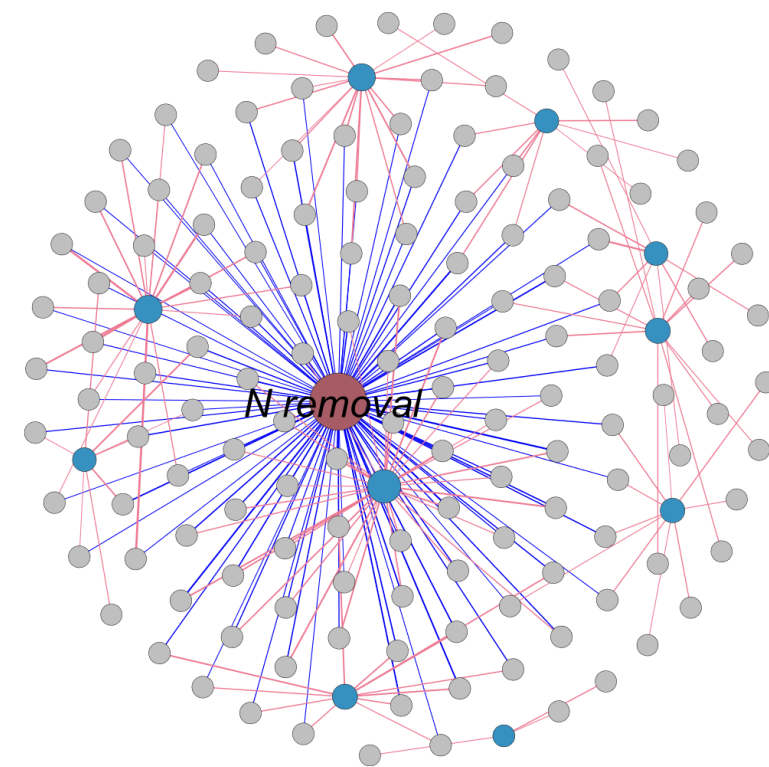
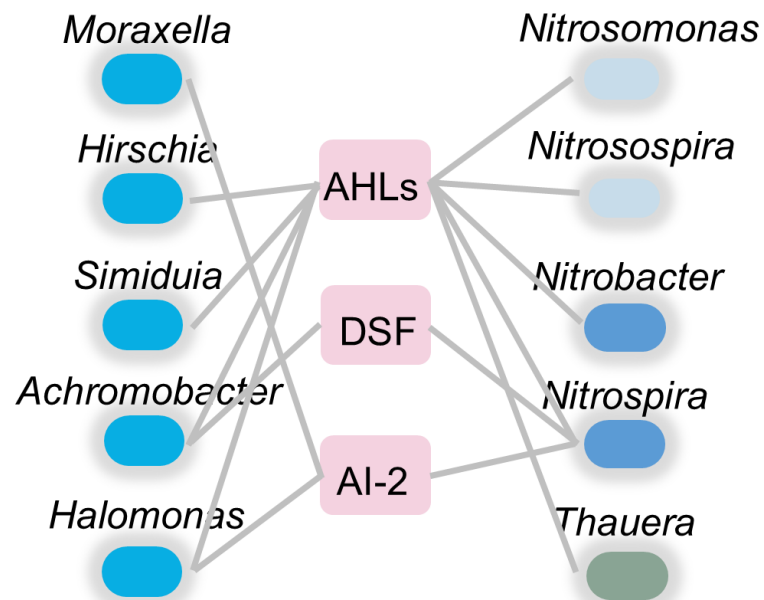
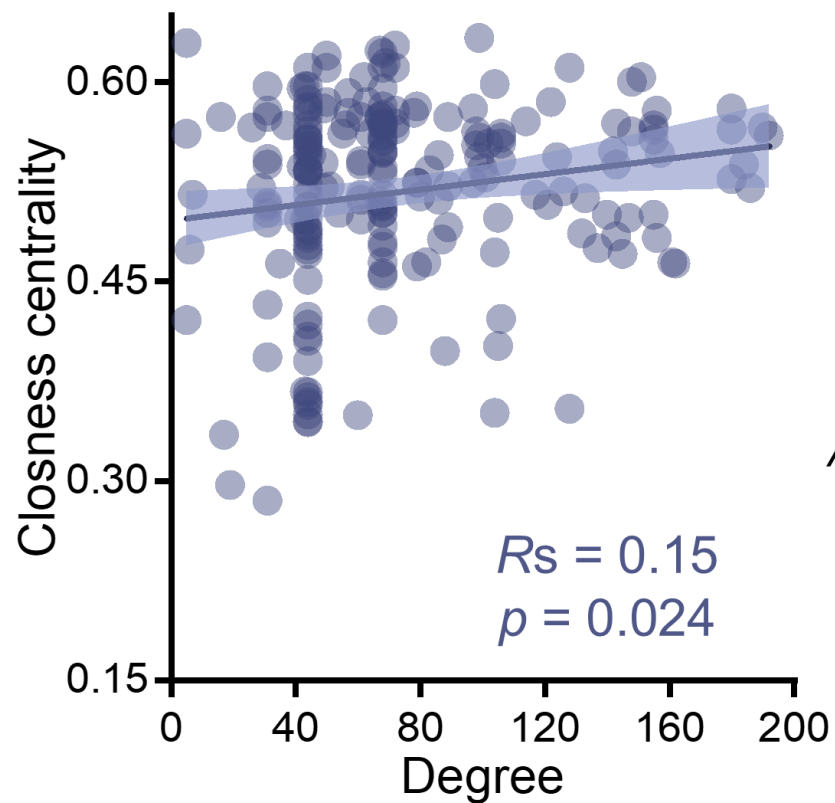


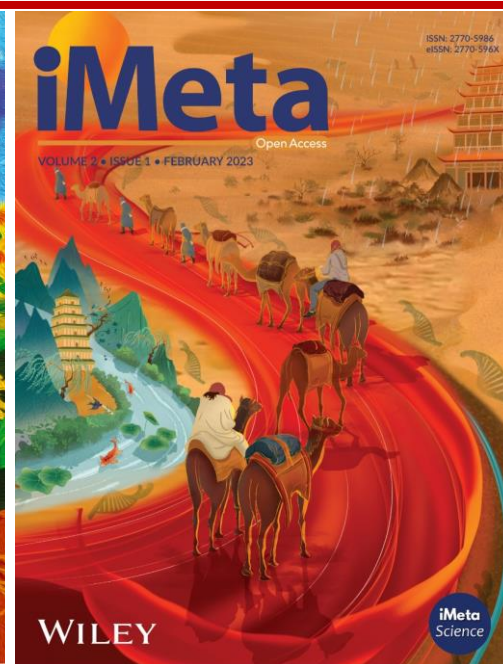
Figure 2. Analysis of QS communication networks in WWTPs.



# Summary

- ❑ In this study, through the collection and analysis of more than 1000 activated sludge samples worldwide, we built QS and QQ bacterial databases in activated sludge to form an online network analysis platform.
- ❑ QS bacteria affected the function of wastewater treatment plant through direct and indirect effects and maintained a high positive correlation with the performance.
- ❑ According to their own needs, readers can use the browsing, classification search, network construction and functional analysis and other functions;
- ❑ Website link: <http://www.qscnas.cn/>

Yong-Chao Wang, Sen Wang, Ya-Hui Lv, Can Wang. 2025. QSCNAS: A platform for quorum sensing and quenching bacteria analysis in global wastewater treatment plants. *iMeta* 4: e70026. <https://doi.org/10.1002/imt2.70026>



“***iMeta***” is a Wiley partner journal launched by iMeta Science Society in 2022, first **impact factor (IF) 23.8 in 2024, ranking 2/161 in the microbiology**. It aims to publish innovative and high-quality papers with broad and diverse audiences. **Its scope is similar to *Nature Biotechnology, Nature Methods, Nature Microbiology, Nature Food, etc.*** Its unique features include video abstract, bilingual publication, and social media dissemination, with more than 600,000 followers. It has published 220+ papers and been cited for 5600+ times, and has been indexed by **SCIE / WOS, PubMed, Google Scholar, and Scopus**.

“***iMetaOmics***” is a sister journal of “***iMeta***” launched in 2024, with a **target IF>10, and its scope is similar to *Nature Communications, Microbiome, ISME J, Nucleic Acids Research, Briefings in Bioinformatics, etc.*** All contributes are welcome!

Society: <http://www.imeta.science>  
Publisher: <https://wileyonlinelibrary.com/journal/imeta>

Submission: <https://wiley.atyponrex.com/journal/IMT2>  
<https://wiley.atyponrex.com/journal/IMO2>

 [office@imeta.science](mailto:office@imeta.science)  
[imetaomics@imeta.science](mailto:imetaomics@imeta.science)

 [Promotion Video](#)

 [iMetaScience](#)

 [iMetaScience](#)