



中国西部多中心前瞻性出生队列——西部贝贝出生队列

李翔宇^{1,2#}, 吴英^{3#}, 易彬^{4#}, 陈梦捷^{5#}, 张刚^{6,7#}, 邵晓珊^{8#}, 蒋秀莲^{9#}, 崔玉霞^{10#}, 陈立¹¹, 董晓静⁵, 张姝¹, 赵耀¹, 邓跃碧¹, 李雪琪², 王阳¹, 吴雷¹, 傅裕¹, 冉丹¹, 彭琛², 杨霄³, 章岚³, 王燕侠⁴, 朱轶⁵, 孙荻娜⁵, 冉域辰¹², 郑丹¹³, 尹璇¹³, 陈玉芬⁹, 龙玉¹⁰, 王文静¹⁰, 赵晓东¹⁴, 刘恩梅^{15*}, 徐涛^{2*}, 李秋^{16*}, 钟雯^{1,2*}

¹重庆医科大学附属儿童医院生命早期队列研究室, 国家儿童健康与疾病临床医学研究中心, 儿童发育疾病研究教育部重点实验室, 重庆市卫生健康委儿童重要器官发育与疾病重点实验室

²广州国家实验室

³电子科技大学医学院附属妇女儿童医院·成都市妇女儿童中心医院

⁴甘肃省妇幼保健院(甘肃省中心医院), 甘肃省儿科临床医学研究中心

⁵重庆医科大学附属第二医院

⁶四川省妇女儿童医院/成都医学院附属妇女儿童医院产科

⁷成都医学院第一附属医院肝胆血管外科

⁸贵阳市妇幼保健院肾内风湿免疫科

⁹青海省妇女儿童医院

¹⁰上海交通大学医学院附属上海儿童医学中心贵州医院

¹¹重庆医科大学附属儿童医院儿童青少年生长发育与心理健康中心, 儿童神经发育与认知障碍重庆市重点实验室, 国家儿童健康与疾病临床医学研究中心, 儿童发育疾病研究教育部重点实验室

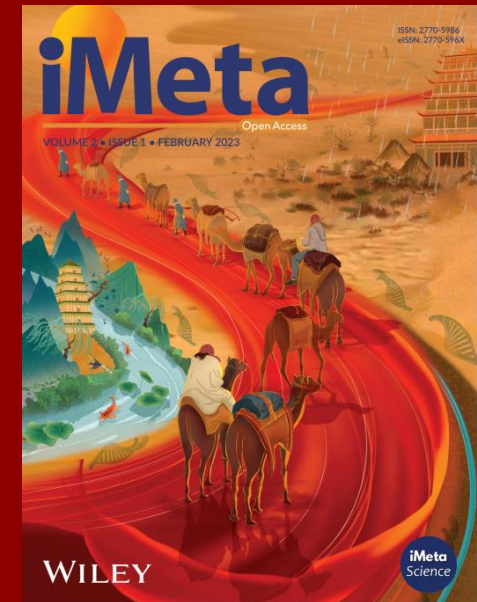
¹²四川省妇女儿童医院/成都医学院附属妇女儿童医院儿童保健科

¹³贵阳市妇幼保健院孕产保健科

¹⁴重庆医科大学附属儿童医院风湿免疫科, 国家儿童健康与疾病临床医学研究中心, 儿童发育疾病研究教育部重点实验室, 儿童感染与免疫罕见病重庆市重点实验室

¹⁵重庆医科大学附属儿童医院呼吸科, 国家儿童健康与疾病临床医学研究中心, 儿童发育疾病研究教育部重点实验室, 儿童感染与免疫罕见病重庆市重点实验室

¹⁶重庆医科大学附属儿童医院肾脏内科, 国家儿童健康与疾病临床医学研究中心, 儿童发育疾病研究教育部重点实验室, 儿童代谢与炎症性疾病重庆市重点实验室



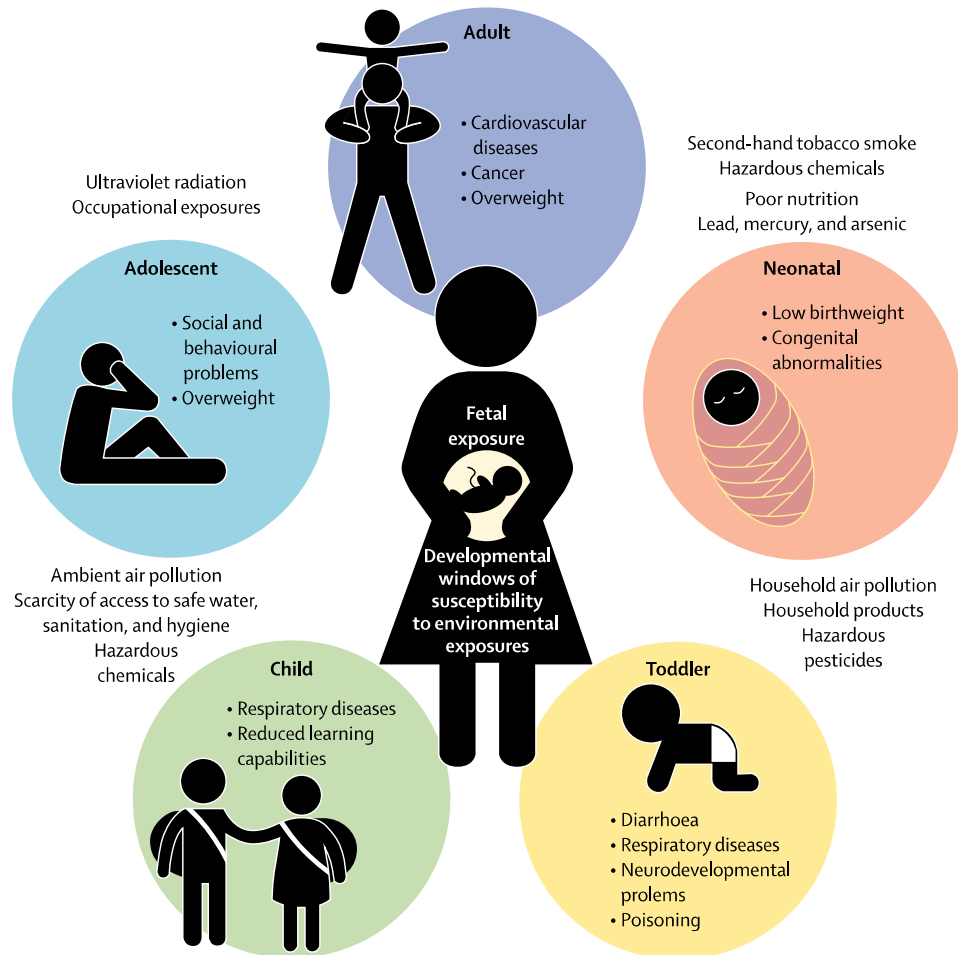
Xiangyu Li, Ying Wu, Bin Yi, Mengjie Chen, Gang Zhang, Xiaoshan Shao, Xiulian Jiang, Yuxia Cui, Li Chen, Xiaojing Dong, Shu Zhang, Yao Zhao, Yuebi Deng, Xueqi Li, Yang Wang, Lei Wu, Yu Fu, Dan Ran, Chen Peng, Xiao Yang, Lan Zhang, Yanxia Wang, Yi Zhu, Dina Sun, Yuchen Ran, Dan Zheng, Xuan Yin, Yufen Chen, Yu Long, Wenjing Wang, Xiaodong Zhao, Enmei Liu, Tao Xu, Qiu Li, Wen Zhong. 2025. A multi-centered prospective birth cohort study in Western China. *iMeta* 4: e70049.

<https://doi.org/10.1002/imt2.70049>



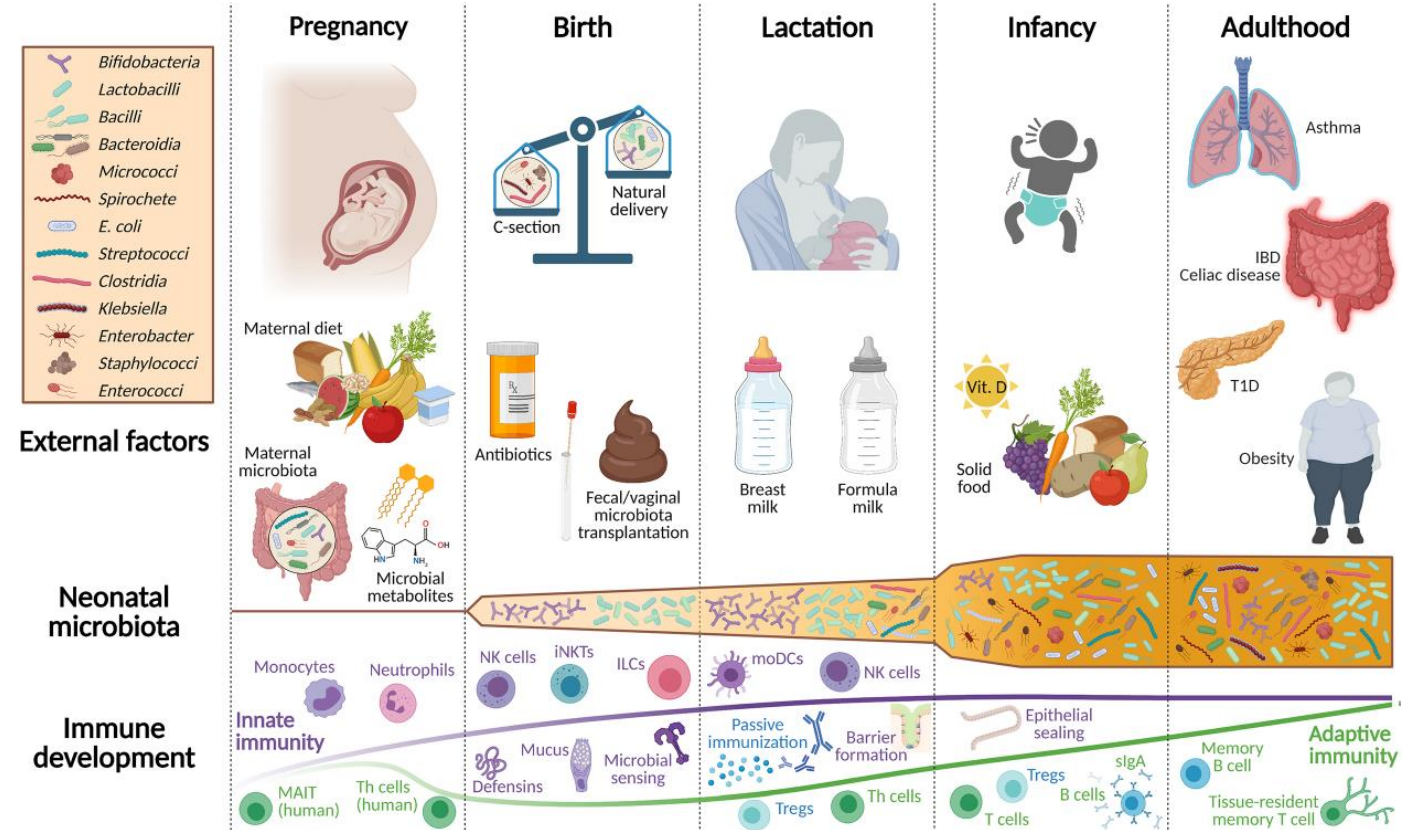
背景

围产期是人类健康发展的关键窗口期



Poore, Kirsten R., et al. *The Lancet Planetary Health*, 2017

出生队列对个体生命早期阶段开展纵向追踪，能够系统性揭示健康和疾病的发展规律



Kalbermatter, Cristina, et al. *Frontiers in immunology*, 2021



背景: 国外出生队列

The Danish National Birth Cohort – its background, structure and aim

Jørn Olsen, Mads Melbye, Sjurður F Olsen, Thorkild IA Sørensen, Peter Aaby, Anne-Marie Nybo Andersen, Dorthe Taxbøl, Kit Dyrnes Hansen, Mette Juhl, Tina Broby Schow, Henrik Toft Sørensen, Jente Andresen, Erik Lykke Mortensen, Annette Wind Olesen and Charlotte Søndergaard

Danish Epidemiology Science Centre, Copenhagen and Aarhus, Denmark

Scand J Public Health 2001; 29: 300–307



International Journal of Epidemiology, 2014, 1719–1725
doi: 10.1093/ije/dyu001
Advance Access Publication Date: 17 February 2014
Cohort Profile



Cohort Profile

Cohort Profile: UK Millennium Cohort Study (MCS)

Roxanne Connelly^{1*} and Lucinda Platt²

Int. J. Epidemiol. Advance Access published April 10, 2016



International Journal of Epidemiology, 2016, 1–7
doi: 10.1093/ije/dyw029
Cohort profile



Cohort profile

Cohort Profile Update: The Norwegian Mother and Child Cohort Study (MoBa)

Per Magnus,^{1*} Charlotte Birke,¹ Kristine Vejrup,¹ Anita Haugan,¹ Elin Alsaker,¹ Anne Kjersti Daltveit,^{1,2} Marte Handal,¹ Margaretha Haugen,¹ Gudrun Høiseith,¹ Gun Peggy Knudsen,¹ Liv Paltiel,¹ Patricia Schreuder,¹ Kristian Tambs,¹ Line Vold¹ and Camilla Stoltenberg^{1,2}

Huuskonen et al. *BMC Pregnancy and Childbirth* (2018) 18:381
https://doi.org/10.1186/s12884-018-2013-9

BMC Pregnancy and Childbirth

STUDY PROTOCOL

Open Access



Kuopio birth cohort – design of a Finnish joint research effort for identification of environmental and lifestyle risk factors for the wellbeing of the mother and the newborn child

Pasi Huuskonen¹, Leea Keski-Nisula², Seppo Heinonen^{2,3}, Sari Voutilainen⁴, Tomi-Pekka Tuomainen⁴, Juha Pekkanen^{5,6}, Jussi Lampi⁶, Soili M Lehto^{7,8}, Hannariikka Haaparanta¹, Antti-Pekka Elomaa⁹, Raimo Voutilainen¹⁰, Katri Backman¹⁰, Hannu Kokki¹¹, Kirsti Kumpulainen¹², Jussi Paananen¹³, Kirsi Vähäkangas¹ and Markku Pasanen^{1*}

Townsend et al. *Pilot and Feasibility Studies* (2019) 5:32
https://doi.org/10.1186/s40814-019-0418-5

Pilot and Feasibility Studies

STUDY PROTOCOL

Open Access



Illawarra Born cross-generational health study: feasibility of a multi-generational birth cohort study

Michelle L. Townsend^{1,2}, Megan A. Kelly^{1,7}, Judy A. Pickard^{1,2}, Theresa A. Larkin^{1,3}, Victoria M. Flood^{5,6}, Peter Caputi^{1,2}, Ian M. Wright^{1,3,4}, Alison Jones^{1,3} and Brin F. S. Grenyer^{1,2*}

Pansieri et al. *BMC Pediatrics* (2020) 20:80
https://doi.org/10.1186/s12887-020-1961-1

BMC Pediatrics

STUDY PROTOCOL

Open Access



NASCITA Italian birth cohort study: a study protocol

Claudia Pansieri¹, Antonio Clavenna¹, Chiara Pandolfini^{1*}, Michele Zanetti¹, Maria Grazia Calati¹, Daniela Miglio¹, Massimo Cartabia¹, Federica Zanetto² and Maurizio Bonati¹

European Journal of Epidemiology (2020) 35:157–168
https://doi.org/10.1007/s10654-020-00614-7

COHORT PROFILE



Lifelines NEXT: a prospective birth cohort adding the next generation to the three-generation Lifelines cohort study

Willemijn D. B. Warmink-Perdijk^{1,2,3}, Lilian L. Peters^{1,2,3}, Ettje F. Tigchelaar⁴, Jackie A. M. Dekens^{4,5}, Soesma A. Jankipersadsing⁴, Alexandra Zhernakova⁴, Willem J. R. Bossers⁶, Jan Sikkema⁵, Ank de Jonge^{1,3}, Sijmen A. Reijneveld⁷, Henkjan J. Verkade⁸, Gerard H. Koppelman^{9,10}, Cisca Wijmenga⁴, Folkert Kuipers¹¹, Sicco A. Scherjon¹²

Received: 24 June 2019 / Accepted: 7 February 2020 / Published online: 25 February 2020
© The Author(s) 2020

European Journal of Epidemiology (2021) 36:129–142
https://doi.org/10.1007/s10654-020-00697-2

COHORT PROFILE



Cohort profile: Singapore Preconception Study of Long-Term Maternal and Child Outcomes (S-PRESTO)

Evelyn Xiu Ling Loo^{1,2}, Shu-E Soh², See Ling Loy^{1,3,4}, Sharon Ng⁵, Mya Thway Tint⁵, Shiao-Yng Chan^{1,5}, Jonathan Yinhao Huang¹, Fabian Yap^{4,6,7}, Kok Hian Tan^{4,8}, Bernard S. M. Chern⁹, Heng Hao Tan³, Michael J. Meaney^{1,10}, Neerja Karnani^{1,11}, Keith M. Godfrey^{12,13}, Yung Seng Lee^{1,2,14}, Jerry Kok Yen Chan^{3,4}, Peter D. Gluckman^{1,15}, Yap-Seng Chong^{1,5}, Lynette Pei-Chi Shek^{1,2,14}, Johan G. Eriksson^{1,5,16,17}, the S-PRESTO Study Group · Airu Chia · Anna Magdalena Fogel · Anne Eng Neo Goh · Anne Hin Yee Chu · Anne Rifkin-Graboi · Anqi Qiu · Bee Wah Lee · Bobby Kyungbeom Cheon · Candida Vaz · Christiani Jayakumar Henry · Claran Gerard Forde · Claudia Chi · Dawn Xin Ping Koh · Desiree Y. Phua · Doris Ngiuk Lan Loh · Elaine Phaik Ling Quah · Elizabeth Huiwen Tham · Evelyn Chung Ning Law · Faidon Magkos · Falk Mueller-Riemenschneider · George Seow Heong Yeo · Hannah Ee Juen Yong · Helen Yu Chen · Heng Hao Tan · Hong Pan · Hugo P S van Bever · Hui Min Tan · Izzuddin Bin Mohd Aris · Jeannie Tay · Jerry Kok Yen Chan · Jia Xu · Joanne Su-Yin Yoong · Johan Gunnar Eriksson · Jonathan Tze Liang Choo · Jonathan Y. Bernard · Jonathan Yinhao Huang · Jun Shi Lai · Karen Mei Ling Tan · Keith M. Godfrey · Kenneth Yung Chiang Kwok · Keri McCrickerd · Kothandaraman Narasimhan · Kok Wee Chong · Kuan Jin Lee · Li Chen · Lieng Hsi Ling · Ling-Wei Chen · Lourdes Mary Daniel · Lynette Pei-Chi Shek · Marielle V. Fortier · Mary Foong-Fong Chong · Mei Chien Chua · Melvin Khoo-Shing Leow · Michelle Zhi Ling Kee · Min Gong · Mya Thway Tint · Navin Michael · Ngee Lek · Oon Hoe Teoh · Priti Mishra · Queenie Ling Jun Li · Sambasivam Sendhil Velan · Seng Bin Ang · Shirong Cai · Si Hui Goh · Sok Bee Lim · Stella Tsotsi · Stephen Chin-Ying Hsu · Sue-Anne Ee Shioh Toh · Suresh Anand Sadananthan · Teng Hong Tan · Tong Wei Yew · Varsha Gupta · Victor Samuel Rajadurai · Wee Meng Han · Wei Wei Pang · Wen Lun Yuan · Yanan Zhu · Yin Bun Cheung · Yiong Huak Chan · Zai Ru Cheng

Received: 10 September 2019 / Accepted: 7 November 2020 / Published online: 21 November 2020
© Springer Nature B.V. 2020



背景: 国内出生队列

The NEW ENGLAND JOURNAL of MEDICINE

CORRECTION

Prevention of Neural-Tube Defects with Folic Acid in China

Published December 9, 1999 | N Engl J Med 1999;341:1864 | DOI: 10.1056/NEJM199912093412424
VOL. 341 NO. 24 | Copyright © 1999

European Journal of Epidemiology (2022) 37:295–304
<https://doi.org/10.1007/s10654-021-00831-8>

COHORT PROFILE

The China birth cohort study (CBCS)

Wentao Yue¹ · Enjie Zhang¹ · Ruixia Liu¹ · Yue Zhang¹ · Chengrong Wang¹ · Shen Gao¹ · Shaofei Su¹ · Xiao Gao¹ · Qingqing Wu² · Xiaokui Yang³ · Aris T. Papageorgiou^{2,4} · Chenghong Yin¹

International Journal of Epidemiology, 2023, 00, 1–7
<https://doi.org/10.1093/ije/dyad103>

IEA International Epidemiological Association OXFORD

Cohort Profile

Cohort Profile: China Southwest Birth Cohort (CSBC)

Ziling Zhao,^{1†} Weixin Liu,^{1†} Jinnuo Hu,¹ Shiqi Chen,¹ Yan Gao,¹ Hong Wang,¹ Min Luo,¹ Tianjin Zhou,¹ and Gang Zhang^{1,*}





西部贝贝出生队列

(A)

Multi-center recruitment and follow-up visits

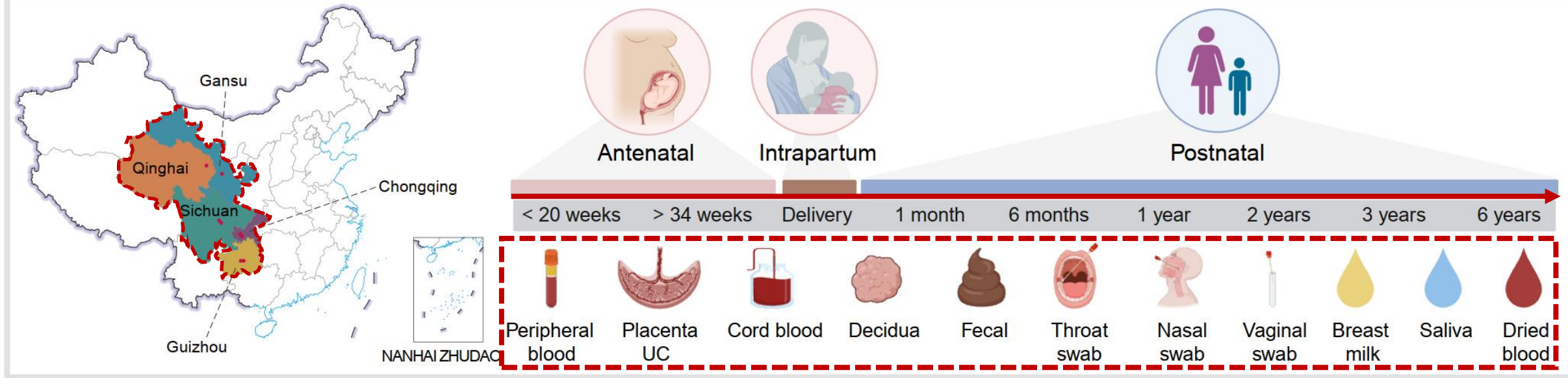


图1. 队列的招募、随访时点和采样种类设置

Medical centers for recruiting and follow-up

Research centers





临床诊疗数据和问卷数据的收集

(B)

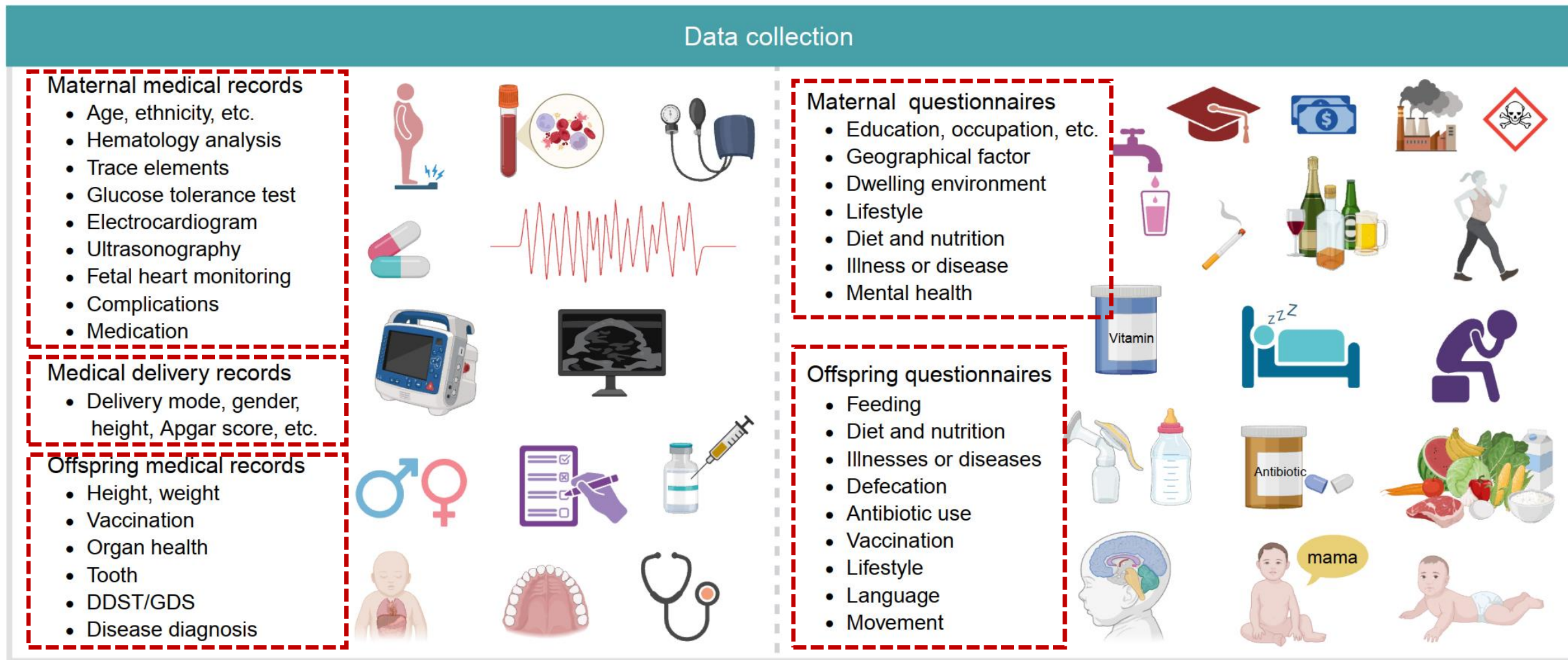


图2. 队列数据采集设置



生物样本的多组学检测

(C)

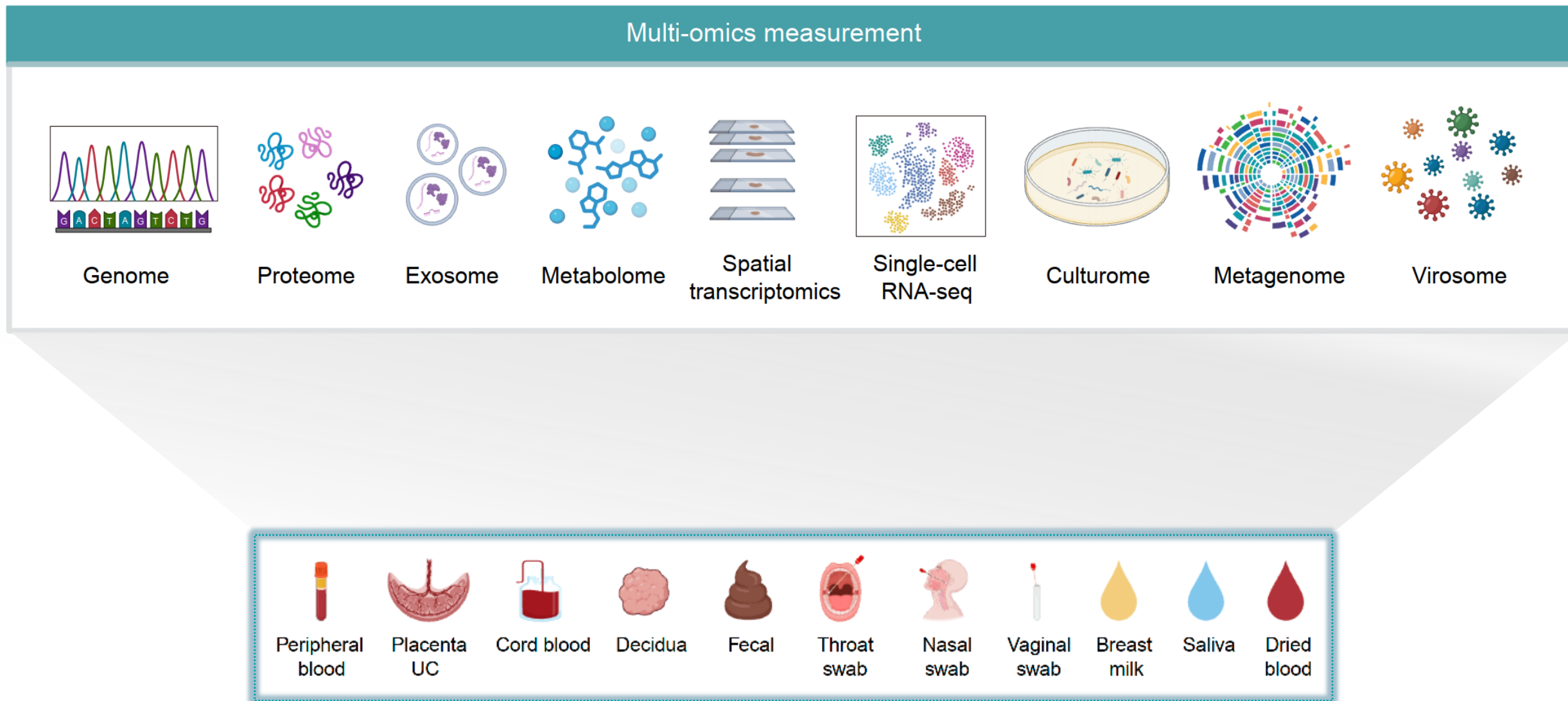


图3. 队列生物样本的多组学检测设计



研究对象的地域和民族特征

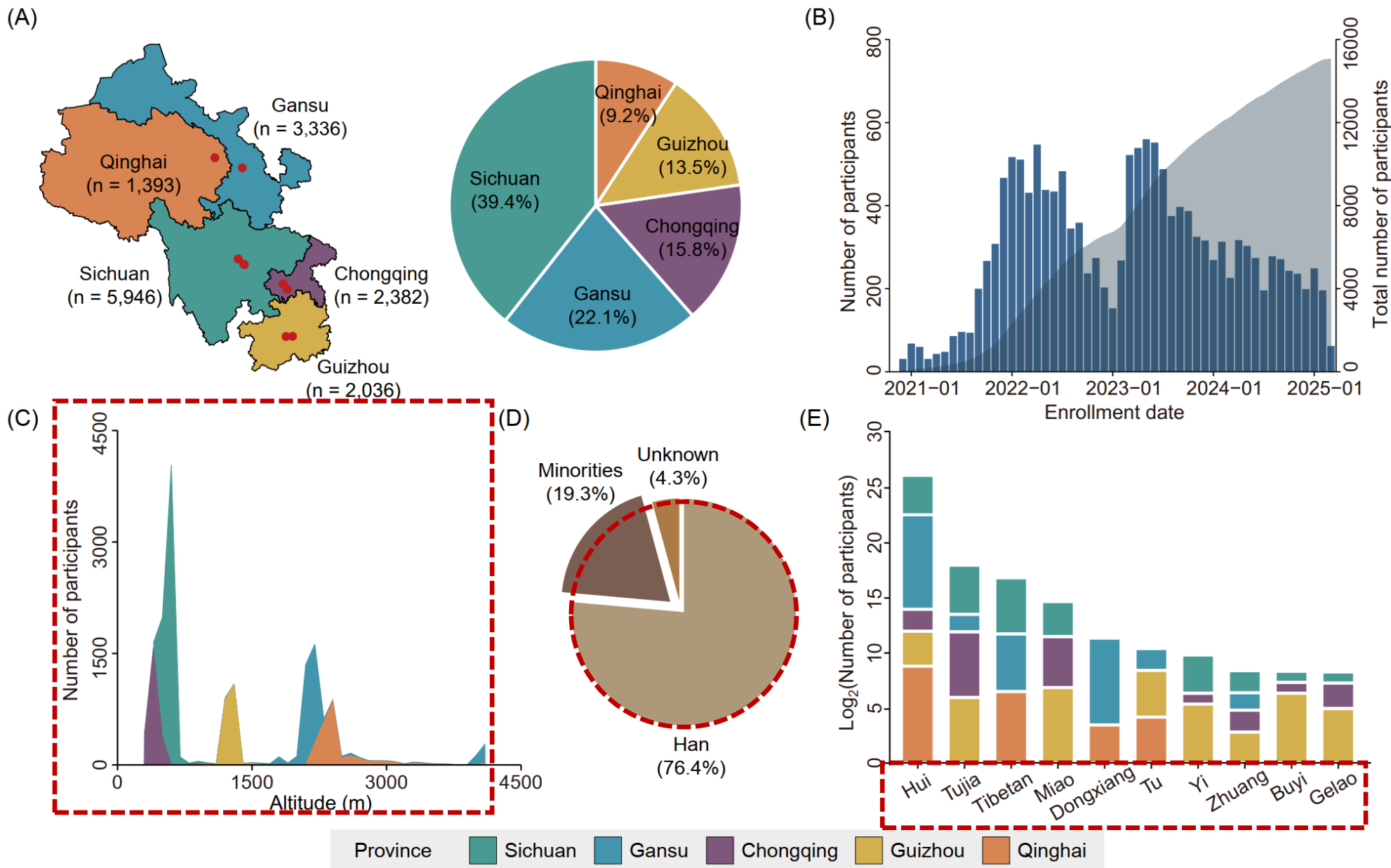


图4. 研究对象的地域和民族分布



研究对象的随访情况

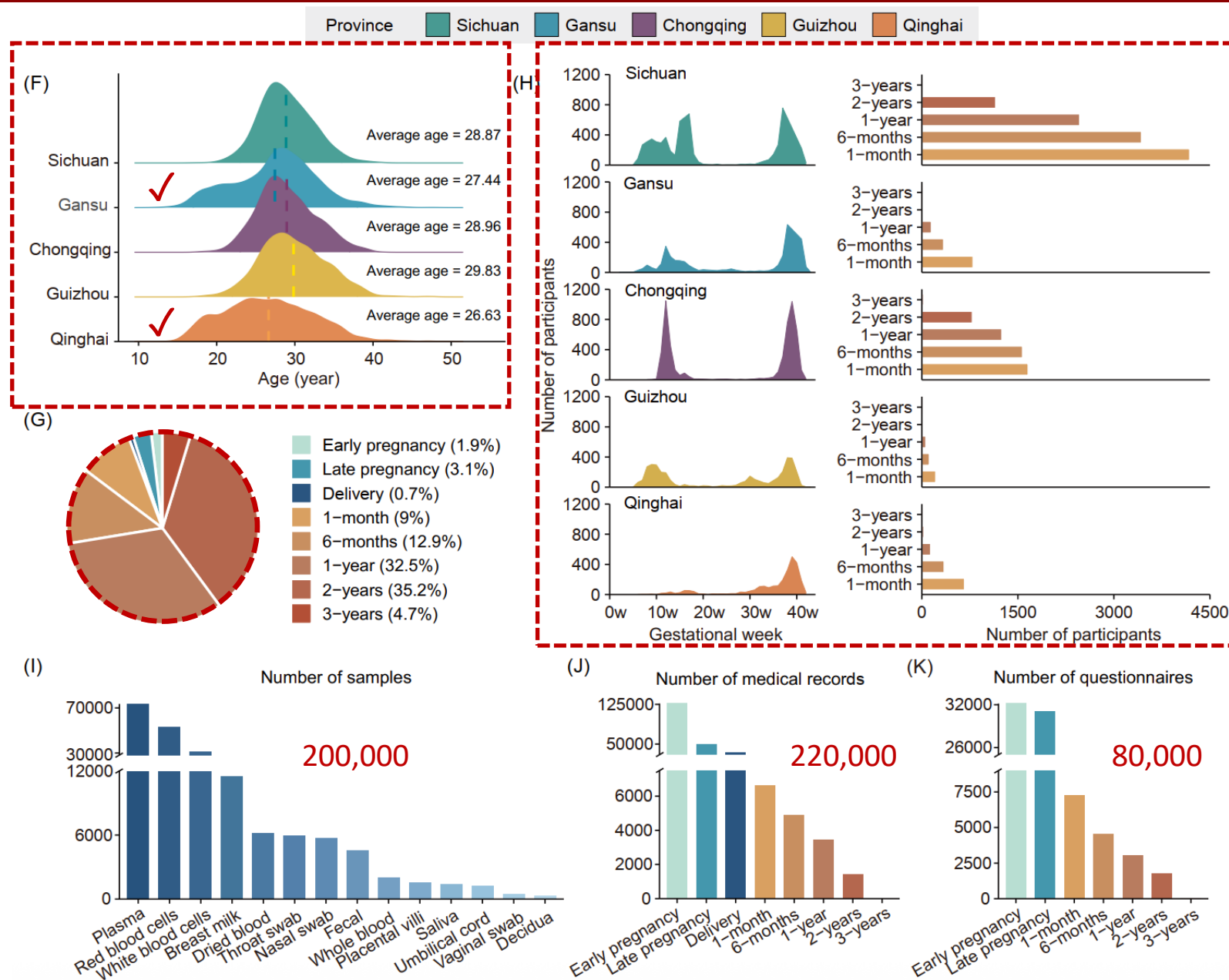


图5. 研究对象的随访进展

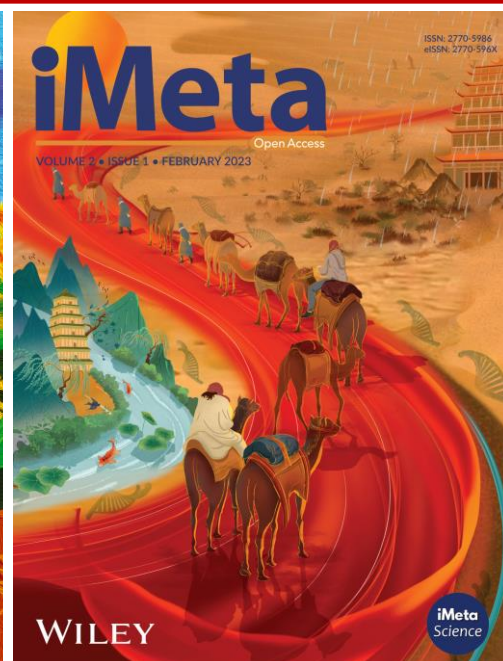
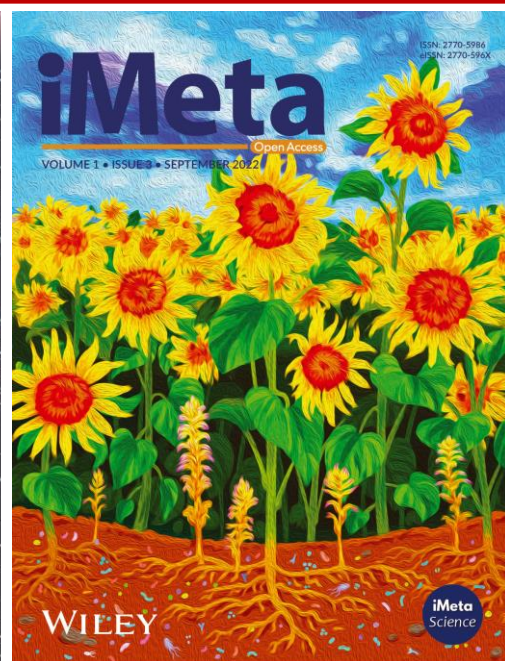


总结

- ❑ 西部贝贝出生队列是一项大规模、多中心的前瞻性研究，已在中国西部五个省市招募了超过15,000名孕妇，这些地区具有显著的海拔和民族多样性。
- ❑ 西部贝贝出生队列能够全面研究海拔、民族及社会经济因素对母婴健康的影响。
- ❑ 西部贝贝出生队列通过纵向随访数据与多组学数据的整合分析，揭示生命早期决定个体健康和疾病的关键因素，将为制定西部地区的公共卫生策略提供科学依据。

Xiangyu Li, Ying Wu, Bin Yi, Mengjie Chen, Gang Zhang, Xiaoshan Shao, Xiulian Jiang, Yuxia Cui, Li Chen, Xiaojing Dong, Shu Zhang, Yao Zhao, Yuebi Deng, Xueqi Li, Yang Wang, Lei Wu, Yu Fu, Dan Ran, Chen Peng, Xiao Yang, Lan Zhang, Yanxia Wang, Yi Zhu, Dina Sun, Yuchen Ran, Dan Zheng, Xuan Yin, Yufen Chen, Yu Long, Wenjing Wang, Xiaodong Zhao, Enmei Liu, Tao Xu, Qiu Li, Wen Zhong. 2025. A multi-centered prospective birth cohort study in Western China. *iMeta* 4: e70049.

<https://doi.org/10.1002/imt2.70049>



iMeta期刊(影响因子**23.8**)由宏科学、千名华人科学家和威立出版, 主编刘双江和傅静远教授。目标为生物/医学/环境综合期刊群(对标Cell/Nature/Science), 任何高影响力的研究、方法和综述均欢迎投稿, 重点关注技术、信息和组学等前沿交叉学科, 已被SCIE、PubMed等收录, IF 23.8位列全球SCI期刊前千分之五, 微生物学研究类全球第一, 中科院生物学双1区Top; 外审平均21天, 投稿至发表中位数57天。
子刊***iMetaOmics***(主编赵方庆和于君教授)、***iMetaMed*** 定位IF>10和15的综合、医学期刊, 欢迎投稿!



主页: <http://www.imeta.science>

出版社: <https://wileyonlinelibrary.com/journal/imeta>

iMeta: <https://wiley.atyponrex.com/journal/IMT2>

投稿: iMetaOmics: <https://wiley.atyponrex.com/journal/IMO2>

iMetaMed: <https://wiley.atyponrex.com/journal/IMM3>



office@imeta.science

imetaomics@imeta.science



宣传片



[iMeta](#)



更新日期
2025/5/21